



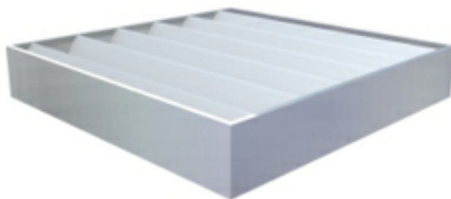
Body

Aluminium frame with cast corners and plastic coated infill panels. Removable front cover for ease of maintenance. Kneespace for occasional seated working



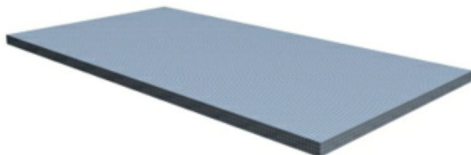
Filter clamping

Spring clamped against purpose made soft rubber seals.



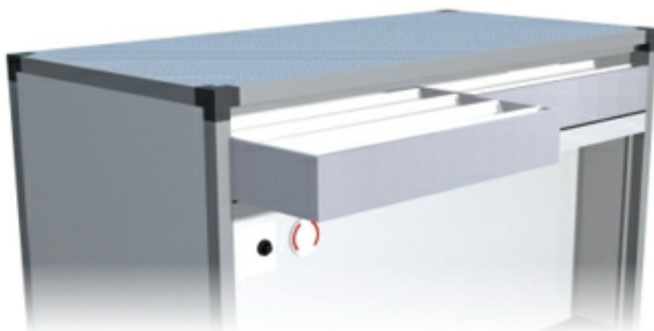
Filters

Selected to suit the application from the full CST range.



Surface

Heavy duty 3mm perforated plate with 4mm dia perforations, powder coated.



Filter removal

Quickly and simply by sliding out through the removable front cover.

Controls

On/off switch or optional speed control wired to standard 13a plug for rapid installation.

